

# MVSI-TS



4 poles - 1.500/1.800 rpm

## Three-phase

DESCRIPTION				MECHANICAL SPECIFICATIONS								ELECTRICAL SPECIFICATIONS					
Code	Type	SIZE	CSA*	Static moment* kgmm		Centrifugal force kg kN				Weight kg		Max input power W		Max. current A		Ia/In	
				50Hz	60Hz	50Hz	60Hz	50Hz	60Hz	50Hz	60Hz	50Hz	60Hz	400V 50Hz	460V 60Hz	50Hz	60Hz
601217	MVSI 15/1410-S02-TS	40	•	561	400	<b>1413</b>	<b>1449</b>	<b>13,9</b>	<b>14,2</b>	42,2	38,5	900	1050	1,45	1,50	4,10	4,20
601219	MVSI 15/1710-S02-TS	50	•	715	485	<b>1798</b>	<b>1757</b>	<b>17,6</b>	<b>17,2</b>	48,8	43,5	1100	1200	2,00	1,90	4,29	4,89
601267	MVSI 15/2000-S02-TS	50	•	817	561	<b>2054</b>	<b>2033</b>	<b>20,1</b>	<b>19,9</b>	51,5	45,5	1350	1450	2,50	2,30	4,30	4,90
601220	MVSI 15/2410-S08-TS	60	•	962	674	<b>2420</b>	<b>2444</b>	<b>23,7</b>	<b>24,0</b>	71,0	64,5	1600	1700	3,20	3,00	6,09	7,23
601268	MVSI 15/3000-S08-TS	60	•	1235	858	<b>3106</b>	<b>3107</b>	<b>30,5</b>	<b>31</b>	81,0	72,0	1900	2000	3,80	3,50	6,50	7,50
601221	MVSI 15/3810-S02-TS	70	•	1526	1034	<b>3840</b>	<b>3744</b>	<b>37,7</b>	<b>36,7</b>	120	111	2200	2500	3,90	3,90	7,11	6,92
601269	MVSI 15/4300-S02-TS	70	•	1720	1173	<b>4326</b>	<b>4250</b>	<b>42,4</b>	<b>41,7</b>	124	118	2500	2800	4,80	4,65	5,90	7,10
601211	MVSI 15/5010-S02-TS	80	•	1990	1364	<b>5007</b>	<b>4941</b>	<b>49,1</b>	<b>48,5</b>	162	154	3600	3400	6,00	5,00	7,02	8,00
601447	MVSI 15/6000-S02-TS	80	•	2248	1677	<b>5654</b>	<b>6075</b>	<b>55,5</b>	<b>59,6</b>	164,5	156	3600	3400	6,00	5,00	7,02	8,00
601204	MVSI 15/9500-S02-TS	97	□	3346	2462	<b>8416</b>	<b>8916</b>	<b>82,6</b>	<b>87,5</b>	318	304	7500	8500	12,2	12,0	6,56	6,67

\* Working moment = 2 x static moment. □ CSA certification on request, with feeding line included.

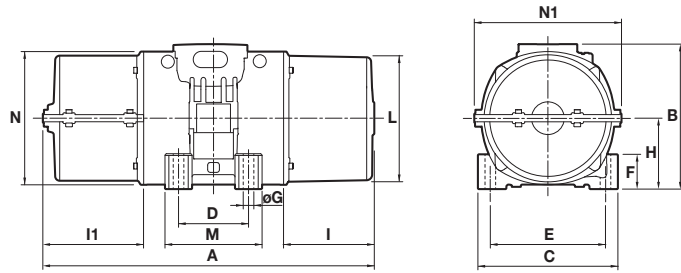


Fig. P

DIMENSIONAL SPECIFICATIONS (mm)

Type	Fig.	A n. split covers		B	C	D	E	Holes		F	H	I	L	M	N	I1	N1	Cable entry thread
		1	2					ØG	N°									
MVSI 15/1410-S02-TS	P	496	543	244	230	140	190	17	4	45	116	108	207	190	225	156	258	M25x1,5
MVSI 15/1710-S02-TS	P	522	543	244	230	140	190	17	4	45	116	134	207	190	225	156	258	M25x1,5
MVSI 15/2000-S02-TS	P	595(50Hz) 523(60Hz)	616(50Hz) 544(60Hz)	244	230	140	190	17	4	45	116	171(50Hz) 134(60Hz)	207	190	225	192(50Hz) 156(60Hz)	258	M25x1,5
MVSI 15/2410-S08-TS	P	662	707	272	275	155	225	22	4	70	130	177	238	210	253	222	287	M25x1,5
MVSI 15/3000-S08-TS	P	662	707	272	275	155	225	22	4	70	130	177	238	210	253	222	287	M25x1,5
MVSI 15/3810-S02-TS	P	624	664	321	310	155	255	23,5	4	77	157	137	277	215	295	177	326	M25x1,5
MVSI 15/4300-S02-TS	P	665(50Hz) 624(60Hz)	664	321	310	155	255	23,5	4	77	157	178(50Hz) 137(60Hz)	277	215	295	177	326	M25x1,5
MVSI 15/5010-S02-TS	P	656	682	347	340	180	280	26	4	80	165	150	303	240	320	176	356	M32x1,5
MVSI 15/6000-S02-TS	P	656	682	347	340	180	280	26	4	80	165	150	303	240	320	176	356	M32x1,5
MVSI 15/9500-S02-TS	P	878	894	437	460	125	380	39	6	35	215	230	387	320	414	246	450	M32x1,5

Ia/In = ratio between start-up current and maximum current.

Several sizes are available with different mounting bolt patterns. Please contact sales office at Italtibras.

# MVSI-TS

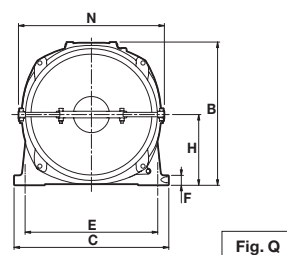
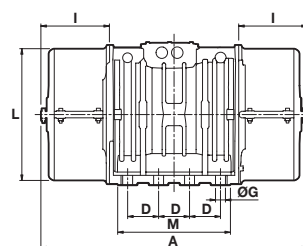
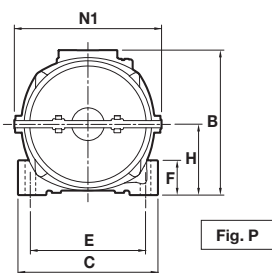
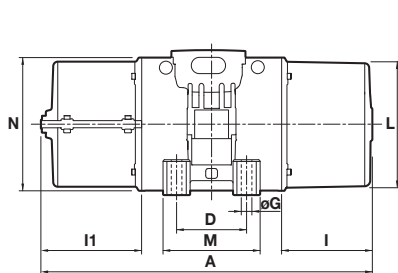


## 6 poles - 1.000/1.200 rpm

### Three-phase

DESCRIPTION				MECHANICAL SPECIFICATIONS								ELECTRICAL SPECIFICATIONS					
Code	Type	SIZE	SB*	Static moment* kgmm		Centrifugal force kg kN				Weight kg		Max input power W		Max. current A		Ia/In	
				50Hz	60Hz	50Hz	60Hz	50Hz	60Hz	50Hz	60Hz	50Hz	60Hz	400V 50Hz	460V 60Hz	50Hz	60Hz
602380	MVSI 10/810-S08-TS	40	•	723	561	<b>809</b>	<b>905</b>	<b>7,94</b>	<b>8,88</b>	49,0	45,0	680	760	1,40	1,35	2,53	3,68
602381	MVSI 10/1110-S08-TS	50	•	1012	715	<b>1132</b>	<b>1151</b>	<b>11,1</b>	<b>11,3</b>	64,5	57,5	750	750	1,65	1,50	3,33	4,13
602382	MVSI 10/1400-S08-TS	50	•	1274	921	<b>1424</b>	<b>1483</b>	<b>14,0</b>	<b>14,5</b>	64,0	56,5	950	1000	1,80	1,70	3,05	3,65
602406	MVSI 10/1610-S08-TS	60	•	1464	962	<b>1638</b>	<b>1549</b>	<b>16,1</b>	<b>15,2</b>	81,0	71,0	1100	1300	2,20	2,20	4,21	4,05
602407	MVSI 10/2100-S08-TS	60	•	1927	1318	<b>2154</b>	<b>2102</b>	<b>21,1</b>	<b>20,6</b>	93,0	83,0	1500	1770	3,00	2,75	3,42	4,00
602167	MVSI 10/2610-S02-TS	70	•	2326	1720	<b>2601</b>	<b>2747</b>	<b>25,5</b>	<b>26,9</b>	131	117	1960	2100	4,10	3,75	5,35	5,60
602230	MVSI 10/3000-S02-TS	70	•	2690	1940	<b>3007</b>	<b>3124</b>	<b>29,5</b>	<b>30,6</b>	146	131	2200	2400	4,50	4,30	4,35	4,81
602154	MVSI 10/3810-S02-TS	80	•	3422	2380	<b>3826</b>	<b>3831</b>	<b>37,5</b>	<b>37,6</b>	189	171	2500	3000	5,10	5,00	5,91	6,00
602204	MVSI 10/4700-S02-TS	80	•	4206	2887	<b>4701</b>	<b>4648</b>	<b>46,1</b>	<b>46,0</b>	205	184	3200	3600	6,50	6,00	5,24	5,50
602350	MVSI 10/5150-S02-TS	80	•	/	3230	/	<b>5200</b>	/	<b>51,0</b>	/	201	/	3600	/	6,00	/	5,50
602138	MVSI 10/5200-S02-TS	90	•	4658	3288	<b>5208</b>	<b>5293</b>	<b>51,1</b>	<b>51,9</b>	239	216	3800	4000	7,00	6,50	4,71	5,08
602351	MVSI 10/5700-S02-TS	90	•	5044	3478	<b>5650</b>	<b>5650</b>	<b>55,4</b>	<b>54,9</b>	241	221	3800	4000	7,00	6,50	4,71	5,08
602091	MVSI 10/6500-S02-TS	90	•	5838	4055	<b>6527</b>	<b>6529</b>	<b>64,0</b>	<b>64,0</b>	269	259	4300	5000	8,20	8,10	4,51	5,83
602352	MVSI 10/7000-S02-TS	90	•	6272	4348	<b>7013</b>	<b>7000</b>	<b>68,8</b>	<b>68,7</b>	276	264	4300	5000	8,20	8,10	4,51	5,83
602092	MVSI 10/8000-S90-TS	95	□	7197	4967	<b>8046</b>	<b>7996</b>	<b>78,9</b>	<b>78,4</b>	316	278	7000	7500	12,6	11,3	4,59	5,58
602093	MVSI 10/9000-S90-TS	95	□	7752	5385	<b>8666</b>	<b>8669</b>	<b>85,0</b>	<b>85,0</b>	327	290	7500	8200	14,0	12,9	4,13	4,88
602137	MVSI 10/10000-S02-TS	97	□	8673	5664	<b>9695</b>	<b>9117</b>	<b>95,1</b>	<b>89,4</b>	382	341	7600	8000	13,5	12,4	4,72	4,92
602227	MVSI 10/13000-S02-TS	97	□	11510	8158	<b>12867</b>	<b>13130</b>	<b>126</b>	<b>129</b>	461	383	9600	10000	17,0	16,0	4,98	5,00
602142	MVSI 10/15000-S02-TS	105	□	12662	8700	<b>14155</b>	<b>14004</b>	<b>139</b>	<b>137</b>	644	606	10600	11270	19,0	18,0	5,88	5,78
602143	MVSI 10/17500-S02-TS	105	□	15500	10439	<b>17327</b>	<b>16804</b>	<b>170</b>	<b>165</b>	705	656	13000	13700	24,5	23,0	5,71	5,96
602244	MVSI 10/19500-S02-TS	105	□	17947	11430	<b>20062</b>	<b>18400</b>	<b>197</b>	<b>181</b>	711	661	13000	13700	24,5	23,0	5,71	5,96
602144	MVSI 10/22000-S90-TS	110	□	20025	12553	<b>22386</b>	<b>20208</b>	<b>220</b>	<b>198</b>	926	896	19000	19000	33,0	25,5	4,67	5,88
602273	MVSI 10/25000-S90-TS	110	□	22364	14785	<b>25000</b>	<b>23800</b>	<b>245</b>	<b>233</b>	960	928	19000	19000	33,0	25,5	4,67	5,88
602336	MVSI 10/30000-S02-TS	120	□	27285	18760	<b>30502</b>	<b>30200</b>	<b>299</b>	<b>296</b>	1210	1160	24000	25800	40,0	38,0	4,89	5,39

\* Working moment = 2 x static moment. □ CSA certification on request, with feeding line included.



DIMENSIONAL SPECIFICATIONS (mm)

Type	Fig.	A		B	C	D	E	ØG	N°	F	H	I	L	M	N	I1	N1	Cable entry thread
		n. split covers	Holes															
MVSI 10/810-S08-TS	P	522(50Hz) 496(60Hz)	543	246	230	140	190	17	4	45	116	134(50Hz) 108(60Hz)	207	190	225	156	258	M25x1,5
MVSI 10/1110-S08-TS	P	595	616	246	230	140	190	17	4	45	116	171	207	190	225	192	258	M25x1,5
MVSI 10/1400-S08-TS	P	618	662	246	230	140	190	17	4	45	116	171	207	190	225	215	258	M25x1,5
MVSI 10/1610-S08-TS	P	662(50Hz) 622(60Hz)	707	246	275	140	190	17	4	70	130	177(50Hz) 137(60Hz)	238	210	253	222	287	M25x1,5
MVSI 10/2100-S08-TS	P	685(50Hz) 662(60Hz)	707	246	275	140	190	17	4	70	130	200(50Hz) 177(60Hz)	238	210	253	222	287	M25x1,5
MVSI 10/2610-S02-TS	P	718	770	321	310	155	255	23,5	4	77	157	178	277	215	295	230	326	M25x1,5
MVSI 10/3000-S02-TS	P	741	770	321	310	155	255	23,5	4	77	157	201	277	215	295	230	326	M25x1,5
MVSI 10/3810-S02-TS	P	758	782	347	340	180	280	26	4	80	165	202	303	240	320	226	356	M32x1,5
MVSI 10/4700-S02-TS	P	822	848	347	340	180	280	26	4	80	165	233	303	240	320	259	356	M32x1,5
MVSI 10/5150-S02-TS	P	837(60Hz)	848(60Hz)	347	340	180	280	26	4	80	165	236	303	240	320	259	356	M32x1,5
MVSI 10/5200-S02-TS	P	818	892	370	390	200	320	28	4	90	180	192	330	270	350	266	382	M32x1,5
MVSI 10/5700-S02-TS	P	866	892	370	390	200	320	28	4	90	180	240	330	270	350	266	382	M32x1,5
MVSI 10/6500-S02-TS	P	866	892	370	390	200	320	28	4	90	180	240	330	270	350	266	382	M32x1,5
MVSI 10/7000-S02-TS	P	866	892	370	390	200	320	28	4	90	180	240	330	270	350	266	382	M32x1,5
MVSI 10/8000-S90-TS	P	896	922	395	392	200	320	28	4	100	192	255	355	270	375	281	410	M32x1,5
MVSI 10/9000-S90-TS	P	896	922	395	392	200	320	28	4	100	192	255	355	270	375	281	410	M32x1,5
MVSI 10/10000-S02-TS	P	878	894	437	460	125	380	39	6	35	215	230	387	320	414	246	450	M32x1,5
MVSI 10/13000-S02-TS	P	1017	1032	437	460	125	380	39	6	35	215	300	387	320	414	315	450	M32x1,5
MVSI 10/15000-S02-TS	P	1030	1100	526	570	140	480	45	8	41	268	200	495	510	516	270	566	M32x1,5
MVSI 10/17500-S02-TS	P	1070	1100	526	570	140	480	45	8	41	268	240	495	510	516	270	566	M32x1,5
MVSI 10/19500-S02-TS	P	1150(50Hz) 1070(60Hz)	1180(50Hz) 1100(60Hz)	526	570	140	480	45	8	41	268	280(50Hz) 240(60Hz)	495	510	516	310(50Hz) 270(60Hz)	566	M32x1,5
MVSI 10/22000-S90-TS	P	1175	1200	607	610	140	520	45	8	38	297	298	542	510	582	323	616	M32x1,5
MVSI 10/25000-S90-TS	P	1175	1200	607	610	140	520	45	8	38	297	298	542	510	582	323	616	M32x1,5
MVSI 10/30000-S02-TS	Q	/	1205	649	700	140	600	45	8	45	320	/	/	510	/	310	660	M32x1,5

la/ln = ratio between start-up current and maximum current.  
 Several sizes are available with different mounting bolt patterns. Please contact sales office at Italtibras.



# MVSI-TS

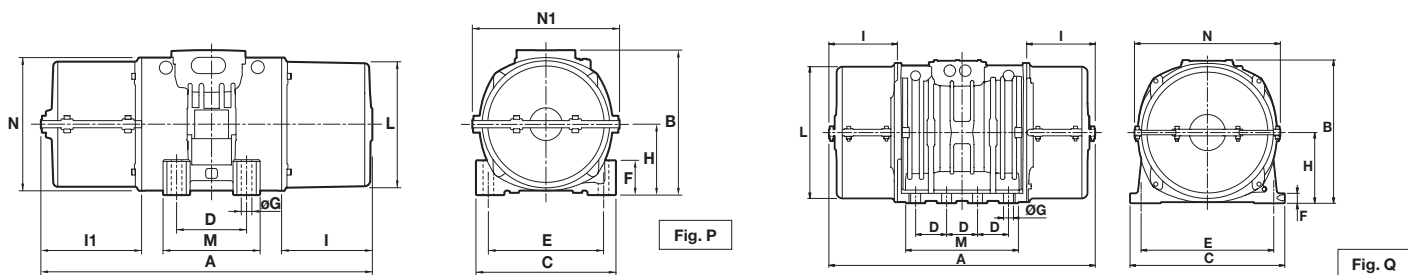


## 8 poles - 750/900 rpm

### Three-phase

DESCRIPTION				MECHANICAL SPECIFICATIONS								ELECTRICAL SPECIFICATIONS					
Code	Type	SIZE	CSA*	Static moment* kgmm		Centrifugal force kN				Weight kg		Max input power W		Max. current A		Ia/In	
				50Hz	60Hz	50Hz	60Hz	50Hz	60Hz	50Hz	60Hz	50Hz	60Hz	400V 50Hz	460V 60Hz	50Hz	60Hz
602610	MVSI 075/910-S08-TS	50	•	1012	1012	<b>637</b>	<b>917</b>	<b>6,30</b>	<b>9,00</b>	56,8	56,8	400	500	1,40	1,30	2,38	2,85
602618	MVSI 075/1310-S08-TS	60	•	1464	1464	<b>922</b>	<b>1327</b>	<b>9,04</b>	<b>13,0</b>	81,0	81,0	950	1100	2,20	2,20	2,63	3,41
602619	MVSI 075/1750-S08-TS	60	•	1927	1927	<b>1214</b>	<b>1747</b>	<b>11,9</b>	<b>17,1</b>	93,0	93,0	1100	1300	2,60	2,26	2,78	3,04
602891	MVSI 075/2110-S02-TS	70	•	2326	2326	<b>1463</b>	<b>2107</b>	<b>14,4</b>	<b>20,7</b>	130	130	1500	1790	4,10	4,20	3,55	2,95
602884	MVSI 075/3110-S02-TS	80	•	3422	3422	<b>2152</b>	<b>3099</b>	<b>21,1</b>	<b>30,4</b>	188	188	2000	2300	5,40	5,20	3,98	4,62
602515	MVSI 075/3800-S02-TS	80	•	4206	4206	<b>2645</b>	<b>3808</b>	<b>25,9</b>	<b>37,4</b>	204	204	2500	3000	6,00	6,00	4,00	4,20
602862	MVSI 075/4200-S02-TS	90	•	4658	4658	<b>2930</b>	<b>4218</b>	<b>28,7</b>	<b>41,4</b>	238	238	2800	3350	6,50	6,50	3,84	4,00
602826	MVSI 075/5300-S02-TS	90	•	5838	5838	<b>3672</b>	<b>5287</b>	<b>36,0</b>	<b>51,9</b>	268	268	4000	4300	8,20	7,85	3,87	5,35
602827	MVSI 075/6500-S90-TS	95	□	7197	7197	<b>4526</b>	<b>6517</b>	<b>44,4</b>	<b>63,9</b>	315	315	4900	5800	9,90	9,50	3,04	3,26
602551	MVSI 075/6800-S02-TS	97	□	7340	7340	<b>4616</b>	<b>6647</b>	<b>45,3</b>	<b>65,2</b>	330	330	5600	6000	10,5	10,0	3,12	3,30
602870	MVSI 075/10000-S02-TS	97	□	12390	10973	<b>7792</b>	<b>9937</b>	<b>76,4</b>	<b>97,5</b>	438	419	6800	7450	13,2	12,0	3,33	3,92
602871	MVSI 075/14000-S02-TS	105	□	17946	15500	<b>11285</b>	<b>14036</b>	<b>111</b>	<b>138</b>	702	680	9200	9600	21,0	19,5	4,99	5,44
602872	MVSI 075/17000-S02-TS	105	□	21337	19064	<b>13418</b>	<b>17263</b>	<b>132</b>	<b>169</b>	755	711	10400	11140	22,0	20,0	5,50	5,90
602873	MVSI 075/22000-S90-TS	110	□	28633	24508	<b>18005</b>	<b>22192</b>	<b>177</b>	<b>218</b>	1015	981	12500	16200	26,5	28,0	5,63	4,71
602535	MVSI 075/26000-S90-TS	110	□	-	28633	-	<b>25927</b>	-	<b>254</b>	-	1015	-	16200	-	28,0	-	4,71
602589	MVSI 075/30000-S02-TS	120	□	47465	33440	<b>29845</b>	<b>30280</b>	<b>293</b>	<b>297</b>	1400	1280	24400	-	43,0	-	6,00	-

\* Working moment = 2 x static moment. □ CSA certification on request, with feeding line included.



DIMENSIONAL SPECIFICATIONS (mm)

Type	Fig.	A		B	C	D	E	Holes		F	H	I	L	M	N	I1	N1	Cable entry thread
		n. split covers	1					2	ØG									
MVSI 075/910-S08-TS	P	595	616	246	230	140	190	17	4	45	116	171	210	190	225	192	258	M25x1,5
MVSI 075/1310-S02-TS	P	662	707	246	275	140	190	17	4	70	130	177	238	210	253	222	287	M25x1,5
MVSI 075/1750-S02-TS	P	685	707	246	275	140	190	17	4	70	130	200	238	210	253	222	287	M25x1,5
MVSI 075/2110-S02-TS	P	718	770	321	310	155	255	23,5	4	77	157	178	277	215	295	230	326	M25x1,5
MVSI 075/3110-S02-TS	P	758	782	347	340	180	280	26	4	80	165	202	303	240	320	226	356	M32x1,5
MVSI 075/3800-S02-TS	P	822	848	347	340	180	280	26	4	80	165	233	303	240	320	259	356	M32x1,5
MVSI 075/4200-S02-TS	P	818	892	370	390	200	320	28	4	90	180	192	330	270	350	266	382	M32x1,5
MVSI 075/5300-S02-TS	P	866	892	370	390	200	320	28	4	90	180	240	330	270	350	266	382	M32x1,5
MVSI 075/6500-S90-TS	P	896	922	395	392	200	320	28	4	100	192	255	355	270	375	281	410	M32x1,5
MVSI 075/6800-S02-TS	P	878	894	437	460	125	380	39	6	35	215	230	387	320	414	246	450	M32x1,5
MVSI 075/10000-S02-TS	P	1017	1032	437	460	125	380	39	6	35	215	300	387	320	414	315	450	M32x1,5
MVSI 075/14000-S02-TS	P	1070	1100	526	570	140	480	45	8	41	268	240	485	510	516	270	566	M32x1,5
MVSI 075/17000-S02-TS	P	1150	1180	526	570	140	480	45	8	41	268	280	485	510	516	310	566	M32x1,5
MVSI 075/22000-S90-TS	P	1175	1200	607	610	140	520	45	8	38	297	298	542	510	582	323	616	M32x1,5
MVSI 075/26000-S90-TS	P	1175	1200	607	610	140	520	45	8	38	297	298	542	510	582	323	616	M32x1,5
MVSI 075/30000-S02-TS	Q	/	1325	649	700	140	600	45	8	45	320	/	/	510	/	370	660	M32x1,5

la/In = ratio between start-up current and maximum current.

Several sizes are available with different mounting bolt patterns. Please contact sales office at Italtibras.