

## 2 poles - 3.000/3.600 rpm

### Three-phase

DESCRIPTION				MECHANICAL SPECIFICATIONS								ELECTRICAL SPECIFICATIONS					
Code	Type	SIZE		Static moment* kgmm		Centrifugal force kg                      kN				Weight kg		Max input power W		Max. current A		Ia/In	
				50Hz	60Hz	50Hz	60Hz	50Hz	60Hz	50Hz	60Hz	50Hz	60Hz	400V 50Hz	460V 60Hz	50Hz	60Hz
600311	MVSI 3/100-S02	00	• 120°C	12,1	12,1	<b>122</b>	<b>176</b>	<b>1,20</b>	<b>1,72</b>	5,2	5,2	180	180	0,35	0,30	2,68	3,00
600312	MVSI 3/200-S02	01	• 120°C	20,2	16,2	<b>203</b>	<b>234</b>	<b>1,99</b>	<b>2,29</b>	5,8	5,5	180	180	0,35	0,30	2,68	3,00
600313	MVSI 3/300-S02	10	• 120°C	30,0	22,5	<b>302</b>	<b>326</b>	<b>2,96</b>	<b>3,20</b>	9,0	8,6	260	270	0,60	0,50	3,47	4,20
600314	MVSI 3/500-S02	20	• 120°C	58,0	34,8	<b>584</b>	<b>504</b>	<b>5,72</b>	<b>4,94</b>	14,3	13,3	450	500	0,80	0,75	4,21	4,80
600366	MVSI 3/700-S02	20	• 120°C	69,6	46,4	<b>700</b>	<b>672</b>	<b>6,87</b>	<b>6,59</b>	14,5	14,0	450	500	0,80	0,75	4,21	4,80
600381	MVSI 3/800-S02	30	• 120°C	74,5	55,9	<b>750</b>	<b>810</b>	<b>7,35</b>	<b>7,94</b>	19,6	19,0	650	685	1,10	1,00	3,83	6,00
600513	MVSI 3/1100-S02	35	• 120°C	110	73,0	<b>1105</b>	<b>1057</b>	<b>10,8</b>	<b>10,4</b>	24,0	23,0	1000	1200	1,75	1,75	3,63	4,00
600491	MVSI 3/1300-S08	AF33	• -	128	91,6	<b>1290</b>	<b>1327</b>	<b>12,7</b>	<b>13,0</b>	27,0	25,7	1300	1350	2,10	1,90	3,96	4,98
600504	MVSI 3/1500-S08	AF33	• -	146	110	<b>1470</b>	<b>1595</b>	<b>14,4</b>	<b>15,6</b>	25,3	24,0	1300	1350	2,10	1,90	3,96	4,98
600502	MVSI 3/1600-S02	50	• -	153	102	<b>1545</b>	<b>1483</b>	<b>15,2</b>	<b>14,5</b>	32,0	30,5	1400	1450	2,30	2,00	4,95	6,12
600503	MVSI 3/1800-S02	50	• -	179	128	<b>1802</b>	<b>1853</b>	<b>17,7</b>	<b>18,2</b>	33,0	31,5	2000	2000	3,30	2,90	4,33	5,50
600256	MVSI 3/2010-S90	AF50	• 135°C	205	128	<b>2059</b>	<b>1853</b>	<b>20,2</b>	<b>18,2</b>	48,7	46,3	2200	2200	3,50	3,00	4,62	6,00
600257	MVSI 3/2310-S90	AF50	• 135°C	230	153	<b>2316</b>	<b>2224</b>	<b>22,7</b>	<b>21,8</b>	49,6	47,1	2200	2200	3,50	3,00	4,62	6,00
600470	MVSI 3/3200-S02	AF70	• -	344	215	<b>3457</b>	<b>3112</b>	<b>33,9</b>	<b>30,5</b>	94,0	90,0	4000	4000	6,50	5,60	4,46	5,18
600471	MVSI 3/4000-S02	AF70	• -	387	258	<b>3890</b>	<b>3735</b>	<b>38,2</b>	<b>36,6</b>	96,0	92,0	4000	4000	6,50	5,60	4,46	5,18
600472	MVSI 3/5000-S02	AF70	• -	515	344	<b>5187</b>	<b>4979</b>	<b>50,9</b>	<b>48,8</b>	109	105	5000	5000	7,60	6,90	5,54	7,10
600276	MVSI 3/6510-S02	90	• 135°C	630	443	<b>6357</b>	<b>6420</b>	<b>62,4</b>	<b>63,0</b>	184	178	5500	5500	9,20	8,00	6,45	7,20
600201	MVSI 3/9000-S90	95	- -	895	619	<b>9007</b>	<b>8970</b>	<b>88,4</b>	<b>88,0</b>	215	210	10000	9300	18,0	13,0	4,39	5,23

### Single-phase

Code	Type	SIZE		Static moment* kgmm		Centrifugal force kg                      kN				Weight kg		Max input power W		Max. current A		Ia/In	
				50Hz	60Hz	50Hz	60Hz	50Hz	60Hz	50Hz	60Hz	50Hz	60Hz	400V 50Hz	460V 60Hz	50Hz	60Hz
600311	MVSI 3/100-S02	00	• 120°C	12,1	12,1	<b>122</b>	<b>176</b>	<b>1,20</b>	<b>1,72</b>	5,2	5,2	165	165	0,75	1,52	1,67	2,24
600312	MVSI 3/200-S02	01	• 120°C	20,2	16,2	<b>203</b>	<b>234</b>	<b>1,99</b>	<b>2,29</b>	5,8	5,5	165	165	0,75	1,52	1,67	2,24
600313	MVSI 3/300-S02	10	• 120°C	30,0	22,5	<b>302</b>	<b>326</b>	<b>2,96</b>	<b>3,20</b>	9,0	8,6	280	280	1,25	2,40	2,48	3,52
600314	MVSI 3/500-S02	20	• 120°C	58,0	34,8	<b>584</b>	<b>504</b>	<b>5,72</b>	<b>4,94</b>	14,3	13,3	500	500	2,30	4,50	3,35	4,22
600366	MVSI 3/700-S02	20	• 120°C	69,6	46,4	<b>700</b>	<b>672</b>	<b>6,87</b>	<b>6,59</b>	14,5	14,0	500	500	2,30	4,50	3,35	4,22
600381	MVSI 3/800-S02	30	• 120°C	74,5	55,9	<b>750</b>	<b>810</b>	<b>7,35</b>	<b>7,94</b>	19,6	19,0	700	750	3,25	7,00	4,00	4,14

\* Working moment = 2 x static moment.

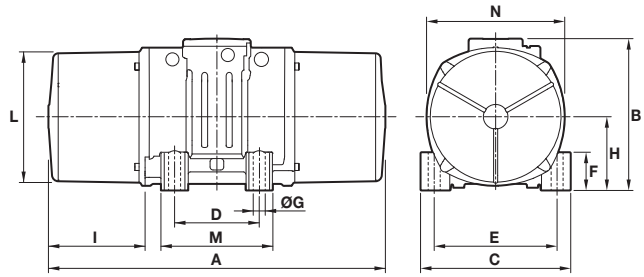


Fig. A

DIMENSIONAL SPECIFICATIONS (mm)

Type	Fig.	A	B	C	D	E	Holes		F	H	I	L	M	N	Capacitor (µF)		Cable entry thread
							ØG	N°							220V 50Hz	115V 60Hz	
MVSI 3/100-S02	A	211	150	125	62-74**	106	9	4	22	61	46	103	98	117	-	-	M20x1,5
MVSI 3/200-S02	A	235	150	125	62-74**	106	9	4	22	61	58	103	98	117	-	-	M20x1,5
MVSI 3/300-S02	A	255	171	152	90	125	13	4	28	73	54	127	128	141	-	-	M20x1,5
MVSI 3/500-S02	A	288	203	167	105	140	13	4	30	82,5	65	145	146	160	-	-	M25x1,5
MVSI 3/700-S02	A	288	203	167	105	140	13	4	30	82,5	65	145	146	160	-	-	M25x1,5
MVSI 3/800-S02	A	308	211	205	120	170	17	4	45	93,5	63	170	174	182	-	-	M25x1,5
MVSI 3/1100-S02	A	435	224	205	120	170	17	4	42	104,5	117,5	187	162	203	-	-	M25x1,5
MVSI 3/1300-S08	A	375	217	215	100	180	17	4	47	93,5	106	170	145	182	-	-	M25x1,5
MVSI 3/1500-S08	A	375	217	215	100	180	17	4	47	93,5	106	170	145	182	-	-	M25x1,5
MVSI 3/1600-S02	A	430	244	230	140	190	17	4	45	116	99	207	190	225	-	-	M25x1,5
MVSI 3/1800-S02	A	430	244	230	140	190	17	4	45	116	99	207	190	225	-	-	M25x1,5
MVSI 3/2010-S90	A	458	232	230	140	190	17	4	49	104	101,5	183	180	200	-	-	M25x1,5
MVSI 3/2310-S90	A	458	232	230	140	190	17	4	49	104	101,5	183	180	200	-	-	M25x1,5
MVSI 3/3200-S02	A	560	290	310	155	255	25	4	90	130	137	238	210	253	-	-	M25x1,5
MVSI 3/4000-S02	A	560	290	310	155	255	25	4	90	130	137	238	210	253	-	-	M25x1,5
MVSI 3/5000-S02	A	560	290	310	155	255	25	4	90	130	137	238	210	253	-	-	M25x1,5
MVSI 3/6510-S02	A	680	370	390	200	320	28	4	90	180	160	330	270	350	-	-	M32x1,5
MVSI 3/9000-S90	A	629	395	392	200	320	28	4	100	192	135	355	270	375	-	-	M32x1,5

Type	Fig.	A	B	C	D	E	Holes		F	H	I	L	M	N	Capacitor (µF)		Cable entry thread
							ØG	N°							220V 50Hz	115V 60Hz	
MVSI 3/100-S02	A	211	150	125	62-74**	106	9	4	22	61	46	103	98	117	10	28	M20x1,5
MVSI 3/200-S02	A	235	150	125	62-74**	106	9	4	22	61	58	103	98	117	10	35	M20x1,5
MVSI 3/300-S02	A	255	171	152	90	125	13	4	28	73	54	127	128	141	16	25	M20x1,5
MVSI 3/500-S02	A	288	203	167	105	140	13	4	30	82,5	65	145	146	160	12,5	50	M25x1,5
MVSI 3/700-S02	A	288	203	167	105	140	13	4	30	82,5	65	145	146	160	12,5	-	M25x1,5
MVSI 3/800-S02	A	308	211	205	120	170	17	4	45	93,5	63	170	174	182	25	90	M25x1,5

la/In = ratio between start-up current and maximum current. \*\* Slot.  
 Several sizes are available with different mounting bolt patterns. Please contact sales office at Italtibras.



## 4 poles - 1.500/1.800 rpm

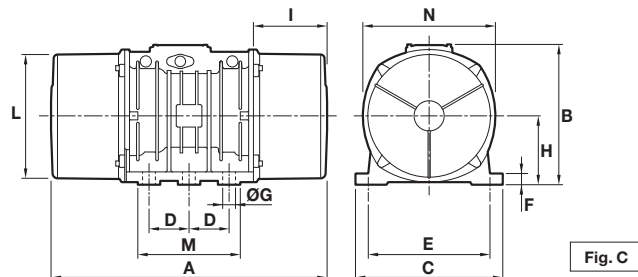
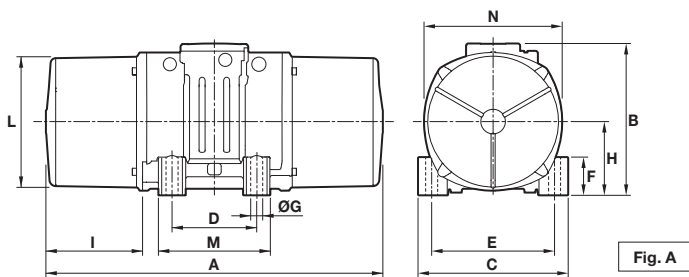
### Three-phase

DESCRIPTION				MECHANICAL SPECIFICATIONS								ELECTRICAL SPECIFICATIONS					
Code	Type	SIZE		Static moment* kgmm		Centrifugal force kg kN				Weight kg		Max input power W		Max. current A		Ia/In	
				50Hz	60Hz	50Hz	60Hz	50Hz	60Hz	50Hz	60Hz	50Hz	60Hz	400V 50Hz	460V 60Hz	50Hz	60Hz
601340	MVSI 15/35-S02	00	• 120°C	12,1	12,1	<b>30,5</b>	<b>43,9</b>	<b>0,30</b>	<b>0,43</b>	5,2	5,2	85	95	0,21	0,20	1,78	1,95
601341	MVSI 15/80-S02	01	• 120°C	32,3	20,2	<b>81,2</b>	<b>73,2</b>	<b>0,80</b>	<b>0,72</b>	6,2	5,8	85	95	0,21	0,20	1,78	1,95
601366	MVSI 15/100-S02	01	• 120°C	37,9	32,3	<b>95,3</b>	<b>117</b>	<b>0,93</b>	<b>1,15</b>	6,6	6,2	85	95	0,21	0,20	1,78	1,95
601367	MVSI 15/200-S02	10	• 120°C	84,2	58,8	<b>213</b>	<b>214</b>	<b>2,09</b>	<b>2,10</b>	11,7	10,7	170	170	0,41	0,40	2,34	2,75
601372	MVSI 15/400-S02	20	• 120°C	163	113	<b>412</b>	<b>411</b>	<b>4,04</b>	<b>4,03</b>	18,5	16,5	300	350	0,60	0,60	3,33	3,50
601373	MVSI 15/550-S02	20	• 120°C	219	163	<b>552</b>	<b>592</b>	<b>5,42</b>	<b>5,81</b>	20,7	18,5	300	350	0,60	0,60	3,33	3,50
601408	MVSI 15/700-S02	30	• 120°C	286	209	<b>720</b>	<b>760</b>	<b>7,06</b>	<b>7,46</b>	26,2	24,5	525	665	0,92	0,98	3,48	4,43
601513	MVSI 15/900-S02	30	• 120°C	357	286	<b>900</b>	<b>1037</b>	<b>8,83</b>	<b>10,2</b>	29,0	26,2	525	665	0,92	0,98	3,48	3,43
601524	MVSI 15/1100-S02	35	• 120°C	415	271	<b>1045</b>	<b>982</b>	<b>10,3</b>	<b>9,63</b>	32,5	30,5	550	680	0,95	0,95	4,45	4,89
601217	MVSI 15/1410-S02	40	• 120°C	561	400	<b>1413</b>	<b>1449</b>	<b>13,9</b>	<b>14,2</b>	41,2	37,5	900	1050	1,45	1,50	4,10	4,20
601219	MVSI 15/1710-S02	50	• 135°C	715	485	<b>1798</b>	<b>1757</b>	<b>17,6</b>	<b>17,2</b>	47,8	42,5	1100	1200	2,00	1,90	4,29	4,89
601267	MVSI 15/2000-S02	50	• 135°C	817	561	<b>2054</b>	<b>2033</b>	<b>20,1</b>	<b>19,9</b>	50,5	44,5	1350	1450	2,50	2,30	4,30	4,90
601220	MVSI 15/2410-S08	60	• 150°C	962	674	<b>2420</b>	<b>2444</b>	<b>23,7</b>	<b>24,0</b>	70,0	63,5	1600	1700	3,20	3,00	6,09	7,23
601268	MVSI 15/3000-S08	60	• 135°C	1235	858	<b>3106</b>	<b>3107</b>	<b>30,5</b>	<b>30,5</b>	80,0	71,0	1900	2000	3,80	3,50	6,50	7,50
601221	MVSI 15/3810-S02	70	• 135°C	1526	1034	<b>3840</b>	<b>3744</b>	<b>37,7</b>	<b>36,7</b>	119	110	2200	2500	3,90	3,90	7,11	6,92
601269	MVSI 15/4300-S02	70	• 135°C	1720	1173	<b>4326</b>	<b>4250</b>	<b>42,4</b>	<b>41,7</b>	123	117	2500	2800	4,80	4,65	5,90	7,10
601211	MVSI 15/5010-S02	80	• 135°C	1990	1364	<b>5007</b>	<b>4941</b>	<b>49,1</b>	<b>48,5</b>	161	153	3600	3400	6,00	5,00	7,02	8,00
601447	MVSI 15/6000-S02	80	• 135°C	2248	1677	<b>5654</b>	<b>6075</b>	<b>55,5</b>	<b>59,6</b>	164	155	3600	3400	6,00	5,00	7,02	8,00
601165	MVSI 15/7000-S02	90	• 135°C	2598	1822	<b>6536</b>	<b>6600</b>	<b>64,1</b>	<b>64,7</b>	208	195	6000	6000	10,5	9,00	6,48	7,67
601166	MVSI 15/9000-S90	95	□ 135°C	3260	2260	<b>8199</b>	<b>8183</b>	<b>80,4</b>	<b>80,3</b>	225	210	7000	8000	11,6	11,5	5,43	5,57
601204	MVSI 15/9500-S02	97	□ 135°C	3346	2462	<b>8416</b>	<b>8916</b>	<b>82,6</b>	<b>87,5</b>	317	303	7500	8500	12,2	12,0	6,56	6,67
601205	MVSI 15/11500-S02	100	□ 135°C	4544	3166	<b>11430</b>	<b>11467</b>	<b>113</b>	<b>112</b>	430	411	10000	10500	17,5	15,5	7,03	8,00
601271	MVSI 15/14500-S02	100	□ 135°C	5614	4126	<b>14120</b>	<b>14940</b>	<b>138</b>	<b>147</b>	458	424	11000	12000	20,0	20,0	8,00	8,00

### Single-phase

Code	Type	SIZE		Static moment* kgmm		Centrifugal force kg kN				Weight kg		Max input power W		Max. current A		Ia/In	
				50Hz	60Hz	50Hz	60Hz	50Hz	60Hz	50Hz	60Hz	50Hz	60Hz	400V 50Hz	460V 60Hz	50Hz	60Hz
601340	MVSI 15/35-S02	00	• 120°C	12,1	12,1	<b>30,5</b>	<b>43,9</b>	<b>0,30</b>	<b>0,43</b>	5,2	5,2	90	100	0,43	1,00	1,20	1,30
601341	MVSI 15/80-S02	01	• 120°C	32,3	20,2	<b>81,2</b>	<b>73,2</b>	<b>0,80</b>	<b>0,72</b>	6,2	5,8	90	100	0,43	1,00	1,20	1,30
601366	MVSI 15/100-S02	01	• 120°C	37,9	32,3	<b>95,3</b>	<b>117</b>	<b>0,93</b>	<b>1,15</b>	6,6	6,2	90	100	0,43	1,00	1,20	1,30
601367	MVSI 15/200-S02	10	• 120°C	84,2	58,8	<b>213</b>	<b>214</b>	<b>2,09</b>	<b>2,10</b>	11,7	10,7	210	230	1,00	2,00	1,50	1,85
601372	MVSI 15/400-S02	20	• 120°C	163	113	<b>412</b>	<b>411</b>	<b>4,04</b>	<b>4,03</b>	18,5	16,5	240	320	1,20	2,80	2,50	2,21
601373	MVSI 15/550-S02	20	• 120°C	219	163	<b>552</b>	<b>592</b>	<b>5,42</b>	<b>5,81</b>	20,7	18,5	240	320	1,20	2,80	2,50	2,21
601408	MVSI 15/700-S02	30	• 120°C	286	209	<b>720</b>	<b>760</b>	<b>7,06</b>	<b>7,46</b>	26,2	24,5	450	550	2,15	5,15	5,44	3,63

\* Working moment = 2 x static moment. □ CSA certification on request, with feeding line included.



DIMENSIONAL SPECIFICATIONS (mm)

Type	Fig.	A	B	C	D	E	Holes		F	H	I	L	M	N	Capacitor (µF)		Cable entry thread
							ØG	N°							220V 50Hz	115V 60Hz	
MVSI 15/35-S02	A	211	150	125	62-74**	106	9	4	22	61	46	103	98	117	-	-	M20x1,5
MVSI 15/80-S02	A	249	150	125	62-74**	106	9	4	22	61	65	103	98	117	-	-	M20x1,5
MVSI 15/100-S02	A	249	150	125	62-74**	106	9	4	22	61	65	103	98	117	-	-	M20x1,5
MVSI 15/200-S02	A	301	171	152	90	125	13	4	28	73	77	127	128	141	-	-	M20x1,5
MVSI 15/400-S02	A	344	203	167	105	140	13	4	30	82,5	93	145	146	160	-	-	M25x1,5
MVSI 15/550-S02	A	386	203	167	105	140	13	4	30	82,5	114	145	146	160	-	-	M25x1,5
MVSI 15/700-S02	A	394	211	205	120	170	17	4	45	93,5	106	170	174	182	-	-	M25x1,5
MVSI 15/900-S02	A	394	211	205	120	170	17	4	45	93,5	106	170	174	182	-	-	M25x1,5
MVSI 15/1100-S02	A	435	224	205	120	170	17	4	42	104,5	117,5	187	162	203	-	-	M25x1,5
MVSI 15/1410-S02	A	448	244	230	140	190	17	4	45	116	108	207	190	225	-	-	M25x1,5
MVSI 15/1710-S02	A	500	244	230	140	190	17	4	45	116	134	207	190	225	-	-	M25x1,5
MVSI 15/2000-S02	A	574(50Hz) 500(60Hz)	244	230	140	190	17	4	45	116	171(50Hz) 134(60Hz)	207	190	225	-	-	M25x1,5
MVSI 15/2410-S08	A	537	272	275	155	225	22	4	70	130	137	238	210	253	-	-	M25x1,5
MVSI 15/3000-S08	A	617	272	275	155	225	22	4	70	130	177	238	210	253	-	-	M25x1,5
MVSI 15/3810-S02	A	584	321	310	155	255	23,5	4	77	157	137	277	215	295	-	-	M25x1,5
MVSI 15/4300-S02	A	666(50Hz) 584(60Hz)	321	310	155	255	23,5	4	77	157	178(50Hz) 137(60Hz)	277	215	295	-	-	M25x1,5
MVSI 15/5010-S02	A	630	347	340	180	280	26	4	80	165	150	303	240	320	-	-	M32x1,5
MVSI 15/6000-S02	A	630	347	340	180	280	26	4	80	165	150	303	240	320	-	-	M32x1,5
MVSI 15/7000-S02	A	680	370	390	200	320	28	4	90	180	160	330	270	350	-	-	M32x1,5
MVSI 15/9000-S90	A	629	395	392	200	320	28	4	100	192	134,5	355	270	375	-	-	M32x1,5
MVSI 15/9500-S02	C	862	437	460	125	380	39	6	35	215	230	387	320	414	-	-	M32x1,5
MVSI 15/11500-S90	C	990	454	530	140	440	45	6	38	230	240	423	370	448	-	-	M32x1,5
MVSI 15/14500-S90	C	990	454	530	140	440	45	6	38	230	240	423	370	448	-	-	M32x1,5

Type	Fig.	A	B	C	D	E	Holes		F	H	I	L	M	N	Capacitor (µF)		Cable entry thread
							ØG	N°							220V 50Hz	115V 60Hz	
MVSI 15/35-S02	A	211	150	125	62-74**	106	9	4	22	61	46	103	98	117	3,15	25	M20x1,5
MVSI 15/80-S02	A	249	150	125	62-74**	106	9	4	22	61	65	103	98	117	3,15	25	M20x1,5
MVSI 15/100-S02	A	249	150	125	62-74**	106	9	4	22	61	65	103	98	117	3,15	25	M20x1,5
MVSI 15/200-S02	A	301	171	152	90	125	13	4	28	73	77	127	128	141	5	25	M20x1,5
MVSI 15/400-S02	A	344	203	167	105	140	13	4	30	82,5	93	145	146	160	12◦ +20●	35	M25x1,5
MVSI 15/550-S02	A	386	203	167	105	140	13	4	30	82,5	114	145	146	160	12◦ +20●	35◦ +10●	M25x1,5
MVSI 15/700-S02	A	394	211	205	120	170	17	4	45	93,5	106	170	174	182	16◦ +80●	40◦ +120●	M25x1,5

Ia/I<sub>n</sub> = ratio between start-up current and maximum current. \*\* Slot. ◯ Running capacitor / ● Additional capacitor only for start-up. Several sizes are available with different mounting bolt patterns. Please contact sales office at Italtibras.



## 6 poles - 1.000/1.200 rpm

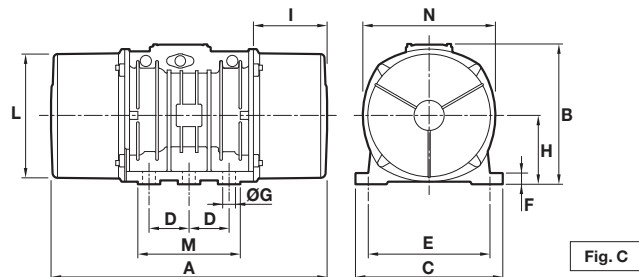
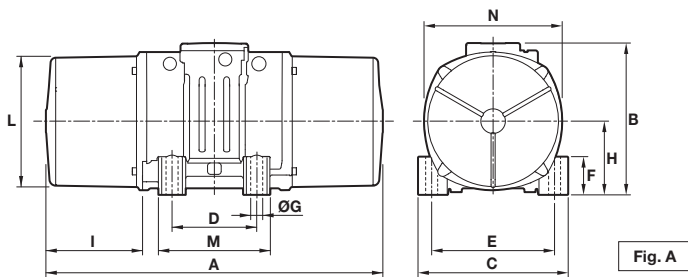
### Three-phase

DESCRIPTION				MECHANICAL SPECIFICATIONS								ELECTRICAL SPECIFICATIONS					
Code	Type	SIZE	 I12D Temp. class	Static moment* kgmm		Centrifugal force kg      kN				Weight kg		Max input power W		Max. current A		Ia/In	
				50Hz	60Hz	50Hz	60Hz	50Hz	60Hz	50Hz	60Hz	50Hz	60Hz	400V 50Hz	460V 60Hz	50Hz	60Hz
602296	MVSI 10/40-S02	10	• 120°C	30,0	30,0	<b>33,5</b>	<b>48,3</b>	<b>0,33</b>	<b>0,47</b>	9,0	9,0	120	135	0,30	0,30	1,90	2,07
602297	MVSI 10/100-S02	10	• 120°C	84,2	84,2	<b>94,3</b>	<b>136</b>	<b>0,93</b>	<b>1,33</b>	11,9	11,9	120	135	0,30	0,30	1,90	2,07
602298	MVSI 10/200-S02	20	• 120°C	163	163	<b>183</b>	<b>264</b>	<b>1,8</b>	<b>2,59</b>	18,1	18,1	185	205	0,50	0,50	2,72	3,10
602314	MVSI 10/310-S02	30	• 120°C	286	209	<b>321</b>	<b>338</b>	<b>3,15</b>	<b>3,32</b>	25,7	24,0	350	380	0,72	0,68	2,63	2,79
602241	MVSI 10/400-S02	30	• 120°C	357	357	<b>400</b>	<b>576</b>	<b>3,93</b>	<b>5,65</b>	29,0	29,0	350	380	0,72	0,68	2,63	2,79
602402	MVSI 10/550-S02	35	• 120°C	457	457	<b>512</b>	<b>737</b>	<b>5,02</b>	<b>7,23</b>	32,6	32,6	350	380	0,75	0,68	2,53	3,68
602403	MVSI 10/650-S02	35	• 120°C	580	457	<b>650</b>	<b>737</b>	<b>6,37</b>	<b>7,23</b>	35,5	32,6	350	380	0,75	0,68	2,53	3,68
602380	MVSI 10/810-S08	40	• 135°C	723	561	<b>809</b>	<b>905</b>	<b>7,94</b>	<b>8,88</b>	44,0	40,0	680	760	1,40	1,35	2,79	3,33
602381	MVSI 10/1110-S08	50	• 135°C	1012	715	<b>1132</b>	<b>1151</b>	<b>11,1</b>	<b>11,3</b>	55,8	48,8	750	750	1,65	1,50	3,33	4,13
602382	MVSI 10/1400-S08	50	• 135°C	1274	921	<b>1424</b>	<b>1483</b>	<b>14</b>	<b>14,5</b>	63,0	55,5	950	1000	1,80	1,70	3,05	3,65
602406	MVSI 10/1610-S08	60	• 135°C	1464	962	<b>1638</b>	<b>1549</b>	<b>16,1</b>	<b>15,2</b>	80,0	70,0	1100	1300	2,20	2,20	4,21	4,05
602407	MVSI 10/2100-S08	60	• 135°C	1927	1318	<b>2154</b>	<b>2102</b>	<b>21,1</b>	<b>20,6</b>	92,0	82,0	1500	1770	3,00	2,75	3,42	4,00
602167	MVSI 10/2610-S02	70	• 135°C	2326	1720	<b>2601</b>	<b>2747</b>	<b>25,5</b>	<b>26,9</b>	130	116	1960	2100	4,10	3,75	5,35	5,60
602230	MVSI 10/3000-S02	70	• 135°C	2690	1940	<b>3007</b>	<b>3124</b>	<b>29,5</b>	<b>30,6</b>	145	130	2200	2400	4,50	4,30	4,35	4,81
602154	MVSI 10/3810-S02	80	• 135°C	3422	2380	<b>3826</b>	<b>3831</b>	<b>37,5</b>	<b>37,6</b>	188	170	2500	3000	5,10	5,00	5,91	6,00
602204	MVSI 10/4700-S02	80	• 135°C	4206	2887	<b>4701</b>	<b>4648</b>	<b>46,1</b>	<b>46</b>	204	183	3200	3600	6,50	6,00	5,24	5,50
602350	MVSI 10/5150-S02	80	• 135°C	4678	3230	<b>5230</b>	<b>5200</b>	<b>51,3</b>	<b>51</b>	225	200	3200	3600	6,50	6,00	5,24	5,50
602138	MVSI 10/5200-S02	90	• 135°C	4658	3288	<b>5208</b>	<b>5293</b>	<b>51,1</b>	<b>51,9</b>	238	215	3800	4000	7,00	6,50	4,71	5,08
602351	MVSI 10/5700-S02	90	• 135°C	5044	3478	<b>5650</b>	<b>5600</b>	<b>55,4</b>	<b>54,9</b>	240	220	3800	4000	7,00	6,50	4,71	5,08
602091	MVSI 10/6500-S02	90	• 135°C	5838	4055	<b>6527</b>	<b>6529</b>	<b>64,0</b>	<b>64,0</b>	268	258	4300	5000	8,20	8,10	4,51	5,83
602136	MVSI 10/6600-S02 Δ	97	• 135°C	6083	3979	<b>6799</b>	<b>6405</b>	<b>66,7</b>	<b>62,8</b>	285	257	5000	5900	10,0	9,80	5,61	5,82
602352	MVSI 10/7000-S02	90	• 135°C	6272	4348	<b>7013</b>	<b>7000</b>	<b>68,8</b>	<b>68,7</b>	275	263	4300	5000	8,20	8,10	4,51	5,83
602092	MVSI 10/8000-S90	95	□ 135°C	7197	4967	<b>8046</b>	<b>7996</b>	<b>78,9</b>	<b>78,4</b>	315	277	7000	7500	12,6	11,3	4,59	5,58
602093	MVSI 10/9000-S90	95	□ 135°C	7752	5385	<b>8666</b>	<b>8669</b>	<b>85,0</b>	<b>85,0</b>	326	289	7500	8200	14,0	12,9	4,13	4,88
602137	MVSI 10/10000-S02	97	□ 135°C	8673	5664	<b>9695</b>	<b>9117</b>	<b>95,1</b>	<b>89,4</b>	381	340	7600	8000	13,5	12,4	4,72	4,92
602349	MVSI 10/11200-S02	97	□ 135°C	9983	6896	<b>11160</b>	<b>11100</b>	<b>109</b>	<b>109</b>	405	370	7600	8000	13,5	12,4	4,72	4,92
602134	MVSI 10/12000-S90 Δ	100	□ 135°C	10996	7543	<b>12294</b>	<b>12141</b>	<b>119</b>	<b>119</b>	500	445	9000	9500	16,3	15,0	5,21	5,73
602227	MVSI 10/13000-S02	97	□ 135°C	11510	8158	<b>12867</b>	<b>13130</b>	<b>126</b>	<b>129</b>	460	382	9600	10000	17,0	16,0	4,98	5,00
602142	MVSI 10/15000-S02	105	□ -	12662	8700	<b>14155</b>	<b>14004</b>	<b>139</b>	<b>137</b>	643	605	10600	11270	19,0	18,0	5,88	5,78
602143	MVSI 10/17500-S02	105	□ -	15500	10439	<b>17327</b>	<b>16804</b>	<b>170</b>	<b>165</b>	691	642	13000	13700	24,5	23,0	5,71	5,96
602244	MVSI 10/19500-S02	105	□ -	17947	11430	<b>20062</b>	<b>18400</b>	<b>197</b>	<b>181</b>	717	650	13000	13700	24,5	23,0	5,71	5,96
602144	MVSI 10/22000-S90	110	□ -	20025	12533	<b>22386</b>	<b>20208</b>	<b>220</b>	<b>198</b>	926	896	19000	19000	33,0	25,5	4,67	5,88
602273	MVSI 10/25000-S90	110	□ -	22364	14785	<b>25000</b>	<b>23800</b>	<b>245</b>	<b>233</b>	960	928	19000	19000	33,0	25,5	4,67	5,88
602336	MVSI 10/30000-S02	120	-	27285	18760	<b>30560</b>	<b>30200</b>	<b>300</b>	<b>296</b>	1200	1050	24000	25800	40,0	38,0	4,89	5,39

\* Working moment = 2 x static moment.

Δ For special application.

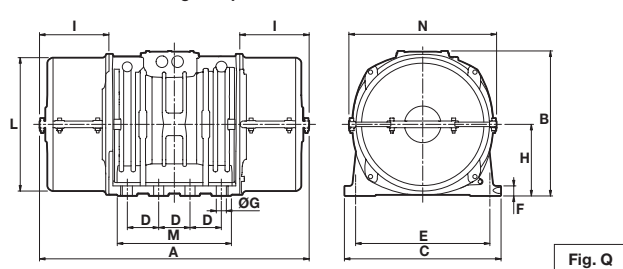
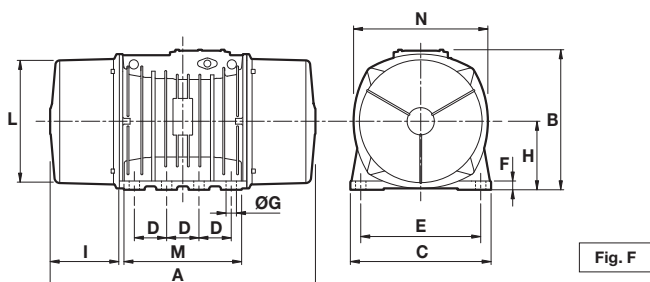
□ CSA certification on request, with feeding line included.



DIMENSIONAL SPECIFICATIONS (mm)

Type	Fig.	A	B	C	D	E	ØG	N°	F	H	I	L	M	N	Capacitor (µF)		Cable entry thread
															220V 50Hz	115V 60Hz	
MVSI 10/40-S02	A	255	171	152	90	125	13	4	28	73,0	54,0	127	128	141	M20X1,5		
MVSI 10/100-S02	A	301	171	152	90	125	13	4	28	73,0	77,0	127	128	141	M20X1,5		
MVSI 10/200-S02	A	344	203	167	105	140	13	4	30	82,5	93,0	145	146	160	M25X1,5		
MVSI 10/310-S02	A	394	211	205	120	170	17	4	45	93,5	106	170	174	182	M25X1,5		
MVSI 10/400-S02	A	394	211	205	120	170	17	4	45	93,5	106	170	174	182	M25X1,5		
MVSI 10/550-S02	A	435	224	205	120	170	17	4	42	104,5	117,5	187	162	203	M25X1,5		
MVSI 10/650-S02	A	480(50Hz) 435(60Hz)	224	205	120	170	17	4	42	104,5	140(50Hz) 117,5(60Hz)	187	162	203	M25X1,5		
MVSI 10/810-S08	A	500(50Hz) 448(60Hz)	244	230	140	190	17	4	45	116	134(50Hz) 108(60Hz)	207	190	225	M25X1,5		
MVSI 10/1110-S08	A	574	244	230	140	190	17	4	45	116	171	207	190	225	M25X1,5		
MVSI 10/1400-S08	A	620	244	230	140	190	17	4	45	116	194	207	190	225	M25X1,5		
MVSI 10/1610-S08	A	617(50Hz) 537(60Hz)	272	275	155	225	22	4	70	130	177(50Hz) 137(60Hz)	238	210	253	M25X1,5		
MVSI 10/2100-S08	A	663(50Hz) 617(60Hz)	272	275	155	225	22	4	70	130	200(50Hz) 177(60Hz)	238	210	253	M25X1,5		
MVSI 10/2610-S02	A	666	321	310	155	255	23,5	4	77	157	178	277	215	295	M25X1,5		
MVSI 10/3000-S02	A	712	321	310	155	255	23,5	4	77	157	201	277	215	295	M25X1,5		
MVSI 10/3810-S02	A	734	347	340	180	280	26	4	80	165	202	303	240	320	M32X1,5		
MVSI 10/4700-S02	A	796	347	340	180	280	26	4	80	165	233	303	240	320	M32X1,5		
MVSI 10/5150-S02	A	826	347	340	180	280	26	4	80	165	248	303	240	320	M32X1,5		
MVSI 10/5200-S02	A	744	370	390	200	320	28	4	90	180	192	330	270	350	M32X1,5		
MVSI 10/5700-S02	A	840	370	390	200	320	28	4	90	180	240	330	270	350	M32X1,5		
MVSI 10/6500-S02	A	840	370	390	200	320	28	4	90	180	240	330	270	350	M32X1,5		
MVSI 10/6600-S02	C	750	437	460	125	380	39	6	35	215	174	387	320	414	M32X1,5		
MVSI 10/7000-S02	A	840	370	390	200	320	28	4	90	180	240	330	270	350	M32X1,5		
MVSI 10/8000-S90	A	870	395	392	200	320	28	4	100	192	255	355	270	375	M32X1,5		
MVSI 10/9000-S90	A	870	395	392	200	320	28	4	100	192	255	355	270	375	M32X1,5		
MVSI 10/10000-S02	C	862	437	460	125	380	39	6	35	215	230	387	320	414	M32X1,5		
MVSI 10/11200-S02	C	912	437	460	125	380	39	6	35	215	255	387	320	414	M32X1,5		
MVSI 10/12000-S90	C	990	454	530	140	440	45	6	38	230	240	423	370	448	M32X1,5		
MVSI 10/13000-S02	C	1002	437	460	125	380	39	6	35	215	300	387	320	414	M32X1,5		
MVSI 10/15000-S02	F	960	526	570	140	480	45	8	41	268	200	486	510	516	M32X1,5		
MVSI 10/17500-S02	F	1040	526	570	140	480	45	8	41	268	240	486	510	516	M32X1,5		
MVSI 10/19500-S02	F	1120(50Hz) 1040(60Hz)	526	570	140	480	45	8	41	268	280(50Hz) 240(60Hz)	486	510	516	M32X1,5		
MVSI 10/22000-S90	F	1150	607	610	140	520	45	8	38	297	298	542	510	582	M32X1,5		
MVSI 10/25000-S90	F	1150	607	610	140	520	45	8	38	297	298	542	510	582	M32X1,5		
MVSI 10/30000-S02	Q	1205	648	700	140	600	45	8	45	320	310	600	510	660	M32X1,5		

la/ln = ratio between start-up current and maximum current.  
Several sizes are available with different mounting bolt patterns. Please contact sales office at Italtvibras.



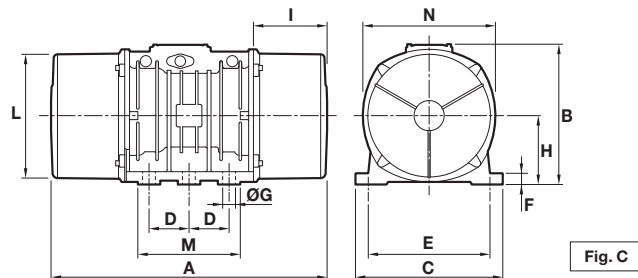
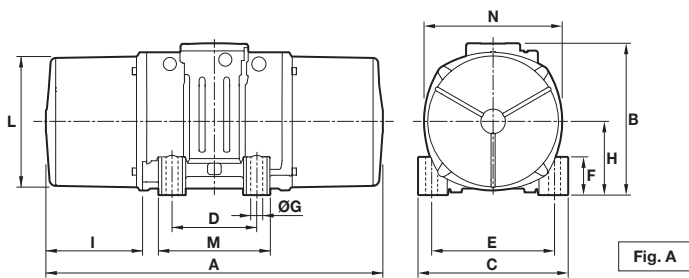
## 8 poles - 750/900 rpm

### Three-phase

DESCRIPTION				MECHANICAL SPECIFICATIONS								ELECTRICAL SPECIFICATIONS							
Code	Type	SIZE		 II2D Temp. class	Static moment* kgmm		Centrifugal force kg      kN				Weight kg		Max input power W		Max. current A		Ia/In		
					50Hz	60Hz	50Hz	60Hz	50Hz	60Hz	50Hz	60Hz	50Hz	60Hz	400V 50Hz	460V 60Hz	50Hz	60Hz	
602568	MVSI 075/150-S02	20	•	130°C	163	163	<b>104</b>	<b>149</b>	<b>1,02</b>	<b>1,46</b>	18,1	18,1	230	250	0,85	0,76	2,13	2,11	
602575	MVSI 075/250-S02	30	•	130°C	286	286	<b>181</b>	<b>260</b>	<b>1,76</b>	<b>2,55</b>	26,2	26,2	350	380	1,10	1,05	2,03	2,29	
602615	MVSI 075/400-S02	35	•	120°C	457	457	<b>288</b>	<b>415</b>	<b>2,83</b>	<b>4,07</b>	32,6	32,6	280	300	0,60	0,68	1,73	2,94	
602616	MVSI 075/530-S02	35	•	120°C	580	580	<b>365</b>	<b>528</b>	<b>3,6</b>	<b>5,2</b>	36,0	36,0	280	300	0,60	0,68	1,73	2,94	
602609	MVSI 075/660-S08	40	•	120°C	723	723	<b>456</b>	<b>656</b>	<b>4,47</b>	<b>6,44</b>	44,0	44,0	400	450	1,20	1,20	2,38	2,58	
602610	MVSI 075/910-S08	50	•	120°C	1012	1012	<b>637</b>	<b>917</b>	<b>6,25</b>	<b>9</b>	55,8	55,8	400	500	1,40	1,30	2,38	2,85	
602618	MVSI 075/1310-S08	60	•	150°C	1464	1464	<b>922</b>	<b>1327</b>	<b>9,04</b>	<b>13</b>	80,0	80,0	950	1100	2,20	2,20	2,63	3,41	
602619	MVSI 075/1750-S08	60	•	135°C	1927	1927	<b>1214</b>	<b>1747</b>	<b>11,9</b>	<b>17,1</b>	92,0	92,0	1100	1300	2,60	2,26	2,78	3,04	
602891	MVSI 075/2110-S02	70	•	135°C	2326	2326	<b>1463</b>	<b>2107</b>	<b>14,4</b>	<b>20,7</b>	130	130	1500	1790	4,10	4,20	3,55	2,95	
602884	MVSI 075/3110-S02	80	•	135°C	3422	3422	<b>2152</b>	<b>3099</b>	<b>21,1</b>	<b>30,4</b>	188	188	2000	2300	5,40	5,20	3,98	4,62	
602515	MVSI 075/3800-S02	80	•	135°C	4206	4206	<b>2645</b>	<b>3808</b>	<b>25,9</b>	<b>37,4</b>	204	204	2500	3000	6,00	6,00	4,00	4,20	
602862	MVSI 075/4200-S02	90	•	135°C	4658	4658	<b>2930</b>	<b>4218</b>	<b>28,7</b>	<b>41,4</b>	238	238	2800	3350	6,50	6,50	3,84	4,00	
602826	MVSI 075/5300-S02	90	•	135°C	5838	5838	<b>3672</b>	<b>5287</b>	<b>36</b>	<b>51,9</b>	268	268	4000	4300	8,20	7,85	3,87	5,35	
602827	MVSI 075/6500-S90	95	□	135°C	7197	7197	<b>4526</b>	<b>6517</b>	<b>44,4</b>	<b>63,9</b>	315	315	4900	5800	9,90	9,50	3,04	3,26	
602551	MVSI 075/6800-S02 Δ	97	□	135°C	7340	7340	<b>4616</b>	<b>6647</b>	<b>45,3</b>	<b>65,2</b>	330	330	5600	6000	10,5	10,0	3,12	3,30	
602870	MVSI 075/10000-S02	97	□	135°C	12390	10973	<b>7792</b>	<b>9937</b>	<b>76,4</b>	<b>97,5</b>	438	419	6800	7450	13,2	12,0	3,33	3,92	
602863	MVSI 075/12000-S90	100	□	135°C	13816	12407	<b>8689</b>	<b>11235</b>	<b>85,2</b>	<b>110</b>	540	520	7600	8300	14,0	13,5	3,72	3,78	
602871	MVSI 075/14000-S02	105	□	-	17946	15500	<b>11285</b>	<b>14036</b>	<b>111</b>	<b>138</b>	702	680	9200	9600	21,0	19,5	4,99	5,44	
602872	MVSI 075/17000-S02	105	□	-	21337	19064	<b>13418</b>	<b>17263</b>	<b>132</b>	<b>169</b>	755	711	10400	11140	22,0	20,0	5,50	5,90	
602873	MVSI 075/22000-S90	110	□	-	28633	24508	<b>18005</b>	<b>22192</b>	<b>177</b>	<b>218</b>	1015	981	12500	16200	26,5	28,0	5,63	4,71	
602535	MVSI 075/26000-S90	110	□	-	-	28633	-	<b>25927</b>	-	<b>254</b>	-	1015	-	16200	-	28,0	-	4,71	
602589	MVSI 075/30000-S02	120	□	-	47465	33440	<b>29845</b>	<b>30280</b>	<b>293</b>	<b>297</b>	1400	1280	24400	-	43,0	-	6,00	-	

\* Working moment = 2 x static moment.    Δ For special application.    □ CSA certification on request, with feeding line included.





DIMENSIONAL SPECIFICATIONS (mm)

Type	Fig.	A	B	C	D	E	Holes		F	H	I	L	M	N	Capacitor (µF)		Cable entry thread
							ØG	N°							220V 50Hz	115V 60Hz	
MVSI 075/150-S02	A	344	203	167	105	140	13	4	30	82,5	93	145	146	160	M25X1,5		
MVSI 075/250-S02	A	394	211	205	120	170	17	4	45	93,5	106	170	174	182	M25X1,5		
MVSI 075/400-S02	A	435	224	205	120	170	17	4	42	104,5	117,5	187	162	203	M25X1,5		
MVSI 075/530-S02	A	480	224	205	120	170	17	4	42	104,5	140	187	162	203	M25X1,5		
MVSI 075/660-S08	A	500	244	230	140	190	17	4	45	116	134	207	190	225	M25X1,5		
MVSI 075/910-S08	A	574	244	230	140	190	17	4	45	116	171	207	190	225	M25X1,5		
MVSI 075/1310-S08	A	617	272	275	155	225	22	4	70	130	177	238	210	253	M25X1,5		
MVSI 075/1750-S08	A	663	272	275	155	225	22	4	70	130	200	238	210	253	M25X1,5		
MVSI 075/2110-S02	A	666	321	310	155	255	23,5	4	77	157	178	277	215	295	M25X1,5		
MVSI 075/3110-S02	A	734	347	340	180	280	26	4	80	165	202	303	240	320	M32X1,5		
MVSI 075/3800-S02	A	796	347	340	180	280	26	4	80	165	233	303	240	320	M32X1,5		
MVSI 075/4200-S02	A	744	370	390	200	320	28	4	90	180	192	330	270	350	M32X1,5		
MVSI 075/5300-S02	A	840	370	390	200	320	28	4	90	180	240	330	270	350	M32X1,5		
MVSI 075/6500-S90	A	870	395	392	200	320	28	4	100	192	255	355	270	375	M32X1,5		
MVSI 075/6800-S02 Δ	C	862	437	460	125	380	39	6	35	215	230	387	320	414	M32X1,5		
MVSI 075/10000-S02	C	1002	437	460	125	380	39	6	35	215	300	387	320	414	M32X1,5		
MVSI 075/12000-S90	C	1070	454	530	140	440	45	6	38	230	280	423	370	448	M32X1,5		
MVSI 075/14000-S02	F	1040	526	570	140	480	45	8	41	268	240	486	510	516	M32X1,5		
MVSI 075/17000-S02	F	1120	526	570	140	480	45	8	41	268	280	486	510	516	M32X1,5		
MVSI 075/22000-S90	F	1150	607	610	140	520	45	8	38	297	298	542	510	582	M32X1,5		
MVSI 075/26000-S90	F	1150	607	610	140	520	45	8	38	297	298	542	510	582	M32X1,5		
MVSI 075/30000-S02	Q	1325	649	700	140	600	45	8	45	320	370	600	510	660	M32X1,5		

la/In = ratio between start-up current and maximum current.

Several sizes are available with different mounting bolt patterns. Please contact sales office at Italtibras.

